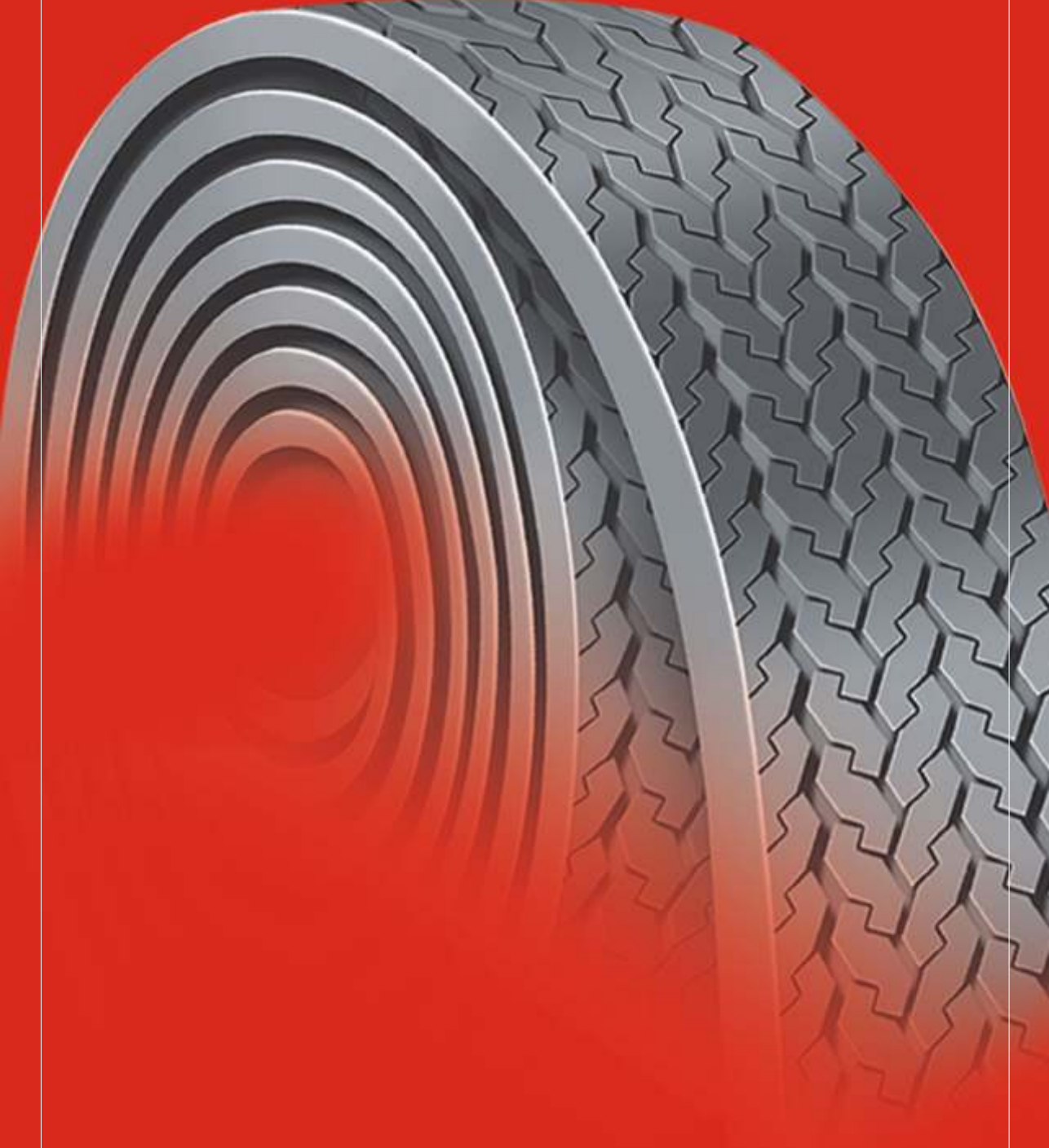




India's most advanced Precured Retreading



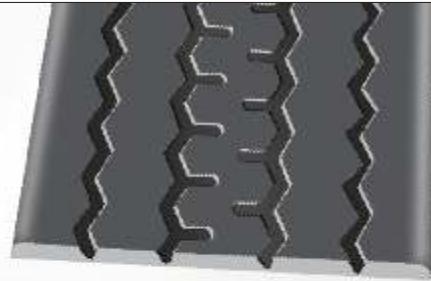
RIB

Truck



Product Branding	Width mm	Tread Depth mm	Length mm	Approx Weight per meter / kg
RIB-125E	232	13.5	3920	3.84
RIB-124E	230	13.5	3450	3.82
RIB-113E	220	13.5	3320	3.64
RIB-112E	215	13.5	3540	3.56
RIB-111E	210	13.5	3540	3.46
RIB-102E	210	13.5	3485	3.46
RIB-104L	220	13.5	3250	3.49
RIB-103	215	13.5	3200	3.63
RIB-103+	215	16.0	3200	4.21
RIB-102	205	13.5	3200	3.43
RIB-102+	205	16.0	3200	3.93
RIB-102L	205	13.5	3250	3.47
RIB-102L+	205	16.0	3250	4.0
RIB-101	195	13.5	3200	3.22
RIB-101+	195	16.0	3200	3.67
RIB-92	185	13.5	3150	3.06
RIB-92+	185	16.0	3150	3.5
RIB-91	178	12.0	3150	2.65
RIB-91+	178	16.0	3150	3.36
Rib-90E	170	12.0	3150	2.54
RIB-76	170	13.0	2865	2.72

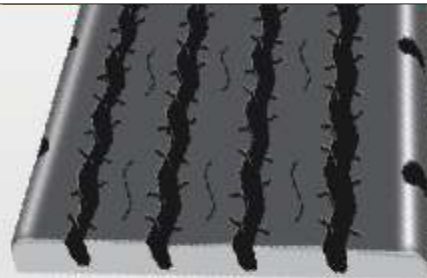
- a) Unique free rolling Five Rib Pattern.
- b) Premium compound for High Mileage.
- c) A versatile tread design for all wheel operation.



SUPER RIB

Product Branding	Width mm	Tread Depth mm	Length mm	Approx Weight per meter / kg
SUPER RIB-103	215	14.5	3200	3.91
SUPER RIB-102	205	14.5	3225	2.65
SUPER RIB-101	195	14.5	3200	3.28
SUPER RIB-94	195	14.5	3150	3.48
SUPER RIB-92	185	14.5	3150	3.11
SUPER RIB-91	178	12.0	3150	2.65

- a) Aesthetic design with sipes.
- b) An outstanding rib all wheel position tread.
- c) Delivers superior mileage with penetration resistance.



Product Branding	Width mm	Tread Depth mm	Length mm	Approx Weight per meter / kg
RHW-102	203	15.0	3215	3.86
RHW-102L+	208	16.5	3250	4.30
RHW-103+	215	16.5	3200	4.45
RHW-104L	219	15.0	3250	4.17
RHW-104	219	13.5	3200	3.47
RHW-105	230	15.0	3215	4.34
RHW-113+	220	16.5	3325	4.52
RHW-115+	230	16.5	3325	4.73
RHW-124+	225	16.5	3450	4.66
RHW-125+	230	16.5	3450	4.77
RHW-126+	240	16.5	3450	4.98
RHW-119+	250	16.5	3300	5.15
RHW-201+	255	16.5	3200	5.26
RHW-212+	260	16.5	3300	5.36
RHW-301L+	300	16.5	3250	5.20

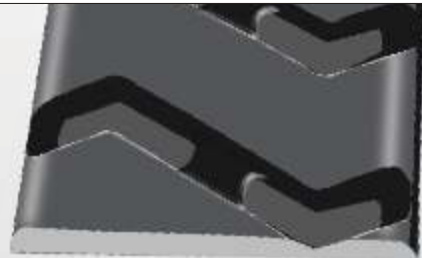
- a) All wheel position pattern.
- b) High mileage & stability.
- c) Proven performance on the long haul.



MG

Product Branding	Width mm	Tread Depth mm	Length mm	Approx Weight per meter / kg
MG-94	190	14.5	3155	3.48
MG-95	200	14.5	3150	3.68
MG-96	215	14.5	3155	4.02
MG-102	205	14.5	3200	3.75
MG-103	215	14.5	3250	3.95
MG-104	225	15.0	3175	4.28
MG-118+	245	17.0	3250	5.00
MG-118L+	245	17.0	3390	4.99

- a) Non Directional Tread Design.
- b) Strong and Bruise resistant.
- c) Excellent Pulling Power in forward and reverse directions.
- d) Stabilised tread with cut resistant compound.



Product Branding	Width mm	Tread Depth mm	Length mm	Approx Weight per meter / kg
SL-125E	230	14.5	3910	4.06
SL-124E	230	14.5	3450	3.91
SL-113E	220	14.5	3320	3.74
SL-112E	215	14.5	3535	3.65
SL-111E	210	14.5	3535	3.56
SL-102E	210	14.5	3485	3.55
SL-103+	215	17.0	3215	4.28
SL-103	215	14.5	3215	3.81
SL-103 DT71	215	14.5	3215	3.58
SL-102	205	14.5	3200	3.78
SL-102+	205	17.0	3200	4.12
SL-102 DT71	205	14.5	3200	3.46
SL-102 DT71+	205	17.0	3200	3.95
SL-94	195	14.5	3150	3.29
SL-94+	195	16.0	3150	3.96
SL-94 DT71	195	14.5	3150	3.25
SL-101	195	14.5	3200	3.57
SL-101+	195	16.0	3200	3.79
SL-101 DT71	195	14.5	3200	3.22
SL-92	185	14.5	3150	3.34
SL-92 DT71	185	14.5	3150	3.02
SL-91	178	14.5	3150	3.20
SL-91 DT71	178	14.5	3150	2.88
SL-76 DT71	170	13.5	2880	2.70

- a) Aggressive Traction Design.
- b) Thick cross overs.
- c) Special Premium Compound.
- d) Ideally suited for the rear wheel.



RL

Product Branding	Width mm	Tread Depth mm	Length mm	Approx Weight per meter / kg
RL-103	215	14.5	3200	3.67
RL-102	205	14.5	3200	3.44
RL-101	195	14.5	3200	3.41
RL-94	195	14.5	3150	3.29
RL-92	185	14.5	3150	3.09

- a) Super Traction.
- b) Cooler Running.
- c) Less prone to cutting.
- d) A dependable, aggressive, open tread design.



EL

Truck



Product Branding	Width mm	Tread Depth mm	Length mm	Approx Weight per meter / kg
EL-102	205	16.0	3200	3.84
EL-103	215	16.0	3200	4.04

- a) A deep, aggressive drive axle design
- b) Deep tread depth for excellent mileage
- c) For radial or bias tyres.



LC

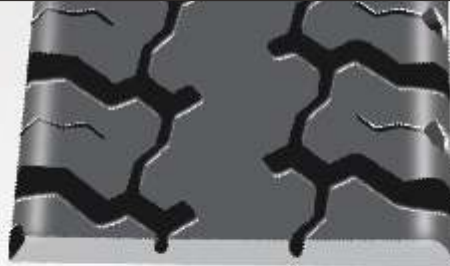
Product Branding	Width mm	Tread Depth mm	Length mm	Approx Weight per meter / kg
LC-94	195	17	3150	4.12
LC-102	205	17	3200	4.34

- a) Transverse, solid block logger pattern.
- b) Excellent penetration & cut resistance.
- c) For on and off the road application.



Product Branding	Width mm	Tread Depth mm	Length mm	Approx Weight per meter / kg
HL-92	185	15.0	3150	3.35
HL-94	195	15.0	3150	3.58
HL-102	205	15.0	3200	3.71
HL-103	215	15.0	3200	3.90

- a) Solid, cross-groove, block-type tread.
- b) Aggressive Traction design with excellent performance.
- c) Best for drive axle fitment



Miler Rib

Product Branding	Width mm	Tread Depth mm	Length mm	Approx Weight per meter / kg
MILER RIB-103L	215	14.5	3290	3.99
MILER RIB-103	215	14.5	3200	3.64
MILER RIB-102	205	14.5	3220	3.68
MILER RIB-94	195	14.5	3150	3.49
MILER RIB-92	185	14.5	3150	3.22
MILER RIB-76	170	14.5	2870	2.72

- a) Attractive five rib pattern, designed to enhance traction.
- b) All wheel fitment conceived for highway operation.
- c) Premium grade, all weather tread for higher mileage.



Miler RL

Truck



Product Branding	Width mm	Tread Depth mm	Length mm	Approx Weight per meter / kg
MILER RL-103	215	15.0	3200	3.97
MILER RL-102	205	15.0	3220	3.81
MILER RL-101	195	15.0	3200	3.59
MILER RL-94	195	15.0	3150	3.60
MILER RL-92	185	15.0	3150	3.39
MILER RL-91	178	13.5	3150	2.97
MILER RL-76	170	13.5	2870	2.64



- a) Aggressive block pattern.
- b) Excellent mileage and superior traction.
- c) Stable block design for consistent even wear.

Express RL

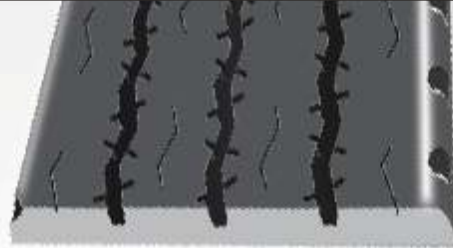
Product Branding	Width mm	Tread Depth mm	Length mm	Approx Weight per meter / kg
EXPRESS RL-103	215	15.0	3200	3.96
EXPRESS RL-102	205	15.0	3220	3.81
EXPRESS RL-101	195	15.0	3200	3.70
EXPRESS RL-94	195	15.0	3150	3.70
EXPRESS RL-92	185	15.0	3150	3.51
EXPRESS RL-91	178	13.5	3150	3.12
EXPRESS RL-76	170	13.5	2865	2.90



- A) A good compromise for traction and mileage.
- B) Optimised compound.
- C) Cooler running.

Product Branding	Width mm	Tread Depth mm	Length mm	Approx Weight per meter / kg
RR - 106	235	13.0	3325	-
RRE -106	235	10.0	3340	3.26
RR - 105	225	13.0	3325	-
RRE -105	225	10.0	3325	-
RR - 104	220	13.0	3325	-
RRE -104	220	10.0	3325	3.05
RR - 103	215	13.0	3300	3.67
RRE -103	215	10.0	3300	2.94
RR - 102	205	13.0	3200	3.28
RRE - 102	205	10.0	3200	2.80

- a) Designed for truck radials.
- b) Aesthetic design with sipes.
- c) Outstanding four rib all wheel position tread.
- d) Superior mileage and free rolling pattern.



RLB

Product Branding	Width mm	Tread Depth mm	Length mm	Approx Weight per meter / kg
RLB-103+	215	16.5	3200	4.30
RLB-113+	220	16.5	3325	4.39
RLB-115+	230	16.5	3325	4.61
RLB-124+	225	16.5	3450	4.51
RLB-125+	230	16.5	3450	4.62
RLB-126+	240	16.5	3450	4.82
RLB-119+	250	16.5	3300	5.02
RLB-201+	255	16.5	3200	5.12
RLB-212+	260	16.5	3300	5.22

- a) Cross over block design with open shoulder
- b) For road & off-road usage.
- c) Very good traction and best for drive axle fitment.



Product Branding	Width mm	Tread Depth mm	Length mm	Approx Weight per meter / kg
RRB-102+	203	17.0	3220	3.91
RRB -104+	219	17.0	3225	4.21
RRB-105L+	230	17.0	3240	4.41

- a) Block design with excellent traction.
- b) High mileage & Best for radial tyre application.
- c) All weather drive axle design.



SLR

Product Branding	Width mm	Tread Depth mm	Length mm	Approx Weight per meter / kg
SLR -104+	225	16.5	3450	4.53
SLR-106+	235	16.5	3450	4.75
SLR-301+	300	16.5	3250	5.60

- a) Aggressive look & superior performance
- b) Good traction with better road grip.
- c) Ideally suited for the rear wheel.



Product Branding	Width mm	Tread Depth mm	Length mm	Approx Weight per meter / kg
RIB-76 LT	170	13.0	2510	2.72
RIB-75	160	12.0	2510	2.36
RIB-72 XLE EXP	152	12.0	2860	2.36
RIB-72E	152	12.0	2510	2.37
RIB-71	148	12.0	3490	2.21
RIB-70	140	12.0	3490	2.12
RIB-61	130	10.5	3450	1.70
RIB-60	120	10.5	3450	1.61

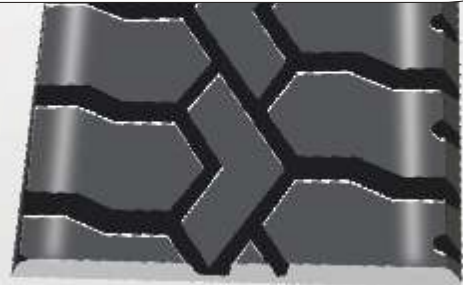
- a) Unique free rolling Five Rib Pattern.
- b) Premium compound for High Mileage.
- c) A versatile tread design for all wheel operation.



SL & DT 71

Product Branding	Width mm	Tread Depth mm	Length mm	Approx Weight per meter / kg
SL-76 DT71 LT	170	13.5	2510	2.72
SL-75	160	13.5	2515	2.74
SL-75 DT71	160	13.5	2515	2.54
SL-70	145	13.5	2515	2.54

- a) Aggressive Traction Design.
- b) Thick cross overs.
- c) Special Premium Compound.
- d) Ideally suited for the rear wheel.



Miler RL

LCV



Product Branding	Width mm	Tread Depth mm	Length mm	Approx Weight per meter / kg
MILER RL-76 LT	170	13.5	2510	2.73
MILER RL-75	160	13.5	2515	2.62
MILER RL-71	150	12.0	3465	2.23
MILER RL-70	140	12.0	3465	2.04
MILER RL-61	130	12.0	3465	1.94

- a) Aggressive block pattern.
- b) Excellent mileage and superior traction.
- c) Stable block design for consistent even wear.



Miler Rib

Product Branding	Width mm	Tread Depth mm	Length mm	Approx Weight per meter / kg
MILER RIB-76 LT	170	13.0	2510	2.69
MILER RIB-75	160	12.0	2515	2.48

- a) Attractive five rib pattern, designed to enhance traction.
- b) All wheel fitment conceived for highway operation.
- c) Premium grade, all weather tread for higher mileage.



Express RL

LCV



Product Branding	Width mm	Tread Depth mm	Length mm	Approx Weight per meter / kg
EXPRESS RL-76 LT	170	13.5	2510	2.86
EXPRESS RL-75	160	13.5	2515	2.69

- A) A good compromise for traction and mileage.
- B) Optimised compound.
- C) Cooler running.



RL

Product Branding	Width mm	Tread Depth mm	Length mm	Approx Weight per meter / kg
RL-70	145	13.5	2515	2.14
RL-75	160	13.5	2515	2.66

- a) Super Traction.
- b) Cooler Running.
- c) Less prone to cutting.
- d) A dependable, aggressive, open tread design.



RB

LCV RADIAL



Product Branding	Width mm	Tread Depth mm	Length mm	Approx Weight per meter / kg
RB -70	145	12.0	3450	2.13
RB -75	160	12.0	2450	2.32

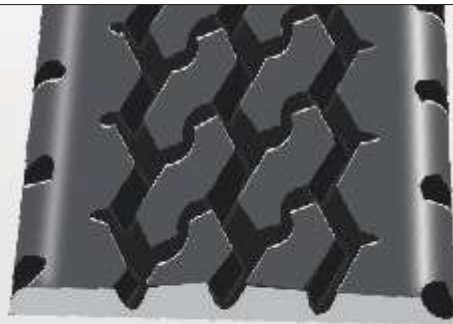
- a) Block design with solid rib provides.
- b) Free rolling with excellent traction
- c) Best for Radial LCV tyres fitment



SLR

Product Branding	Width mm	Tread Depth mm	Length mm	Approx Weight per meter / kg
SLR -76	155	12.0	2500	2.04

- a) Aggressive look & superior performance
- B) Good traction with better road grip.
- c) Ideally suited for the rear wheel.



RV

JEEP



Product Branding	Width mm	Tread Depth mm	Length mm	Approx Weight per meter / kg
RV-61	130	11.0	3454	1.46

- a) Good traction and superior mileage.
- b) Aggressive looks and good all round performance.
- c) Unique tread pattern



JP

Product Branding	Width mm	Tread Depth mm	Length mm	Approx Weight per meter / kg
JP-61	125	11.0	3450	1.54

- a) Good traction and superior mileage.
- b) Aggressive looks and good all round performance.
- c) Unique tread pattern.



Product Branding	Width mm	Tread Depth mm	Length mm	Approx Weight per meter / kg
PC-41	80	8.0	3205	0.90
PC-51	90	8.0	3475	0.86
PC-52	95	8.0	3475	0.92
PC-53	100	8.5	3475	1.05
PC-54	105	8.5	3115	1.10
PC-55	110	8.5	3115	1.12
PC-57	120	10.0	3095	1.40
PC-63	150	9.0	3275	1.80

- a) Unique rib width distribution.
- b) Higher road contact area.
- c) Excellent cornering capability and mileage.



TUD C

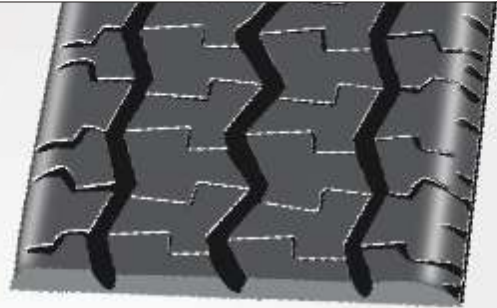
Product Branding	Width mm	Tread Depth mm	Length mm	Approx Weight per meter / kg
TUD C-51	90	8.5	3260	0.88
TUD C-52	95	8.5	3260	0.92
TUD C-53	100	9.0	2890	0.98
TUD C-54	105	9.0	2890	1.02
TUD C-55	110	9.0	3095	1.18
TUD C-56	115	10.5	3095	1.35
TUD C-57	120	10.5	3095	1.39
TUD C-58	125	10.5	3095	1.53
TUD C-59	130	10.5	3095	1.51
TUD C-63	150	9.0	3265	1.83

- a) Unique rib width.
- b) High sipe density.
- c) Higher mileage with increased road contact.



Product Branding	Width mm	Tread Depth mm	Length mm	Approx Weight per meter / kg
CB-57	120	10.5	3095	1.40
CB-58	125	10.5	3095	1.47

- a) Aesthetic design with sipes.
- b) Designed for passenger car tyres
- c) All wheel fitment with best performance



Product Branding	Width mm	Tread Depth mm	Length mm	Approx Weight per meter / kg
TF-60	120	12.0	2150	1.54
TF-61	130	14.0	2230	1.88
TF-62	135	16.0	2230	2.15

- a) For Tractor front operation.
- b) Three rib design with pronounced centre rib.
- c) Chested shoulder rib.
- d) Cut protective tread compound.



Product Branding	Width mm	Tread Depth mm	Length mm	Approx Weight per meter / kg
RCP-605	120	6.5	3160	0.99
RCP-610	125	6.5	3025	1.07
RCP-615	130	7.0	3025	1.18
RCP-620	135	7.5	3025	1.27
RCP-625	140	7.5	3035	1.29
RCP-630	145	9.0	3035	1.40
RCP-635	150	9.0	3035	1.60
RCP-650	165	9.0	3000	1.84
RCP-655	170	9.0	3145	1.73
RCP-680	195	9.0	3205	2.18

- a) Bold block tread pattern suitable for Passenger Radial.
- B) Greater riding comfort.
- c) Excellent mileage with better road grip.



TUD R

Product Branding	Width mm	Tread Depth mm	Length mm	Approx Weight per meter / kg
TUD R-600	110	7.0	2680	0.98
TUD R-610	125	7.5	2680	1.11
TUD R-615	130	7.5	2690	1.21
TUD R-620	135	7.5	3150	1.23
TUD R-625	140	7.5	3025	1.20
TUD R-630	145	7.5	3025	1.28
TUD R-635	150	7.5	3025	1.37
TUD R-640	155	8.5	3025	1.59
TUD R-645	160	8.5	3025	1.63
TUD R-650	165	9.0	3000	1.79
TUD R-655	170	9.0	3145	1.87
TUD R-655+	170	12.0	3145	2.09
TUD R-660+	175	12.0	3145	2.34
TUD R-665	180	9.0	3205	1.91
TUD R-665+	180	12.0	3205	2.41
TUD R-670	185	9.0	3205	1.94
TUD R-670+	185	12.0	3205	2.58
TUD R-680	195	9.0	3205	2.18
TUD R-680+	195	12.0	3205	2.58

- A) Imposing block design gives the car a designer look.
- b) Greater driving comfort.
- c) Sporty looks.
- d) Recommended for Radials.

